

Renewable Energy and Hydroelectric Projects
8th semester, School of Civil Engineering
Lecture Notes

Simulation and optimization for the design and management of hydroelectric works

Andreas Efstratiadis, Nikos Mamassis &
Demetris Koutsoyiannis
School of Civil Engineering
National Technical University of Athens

Presentation available online: www.itia.ntua.gr

Fundamental concepts

- **Storage:** Main function of reservoirs. Because of it—and unlike other works such as flood protection—reservoirs cannot be designed based on merely the marginal distribution of inflows. The time succession of inflows is of great importance and this requires a much more sophisticated probabilistic (or better stochastic) design methodology.
- **Firm yield:** Wrong (or nonscientific) concept (because it implies elimination of risk), which, however, has constituted the design basis of most reservoirs worldwide.
- **Reliability:** The probability of achieving a target, which in the case of a reservoir is to satisfy the water demand. (Reliability = $1 - \text{failure probability}$).
- **Reliable yield:** A constant withdrawal which can be satisfied for a specified reliability. It replaces the concept of firm yield.
- **Storage capacity-yield-reliability (SYR) relationship:** The relationship among these three concepts which constitutes the rational basis of reservoir design.
- **Monte Carlo or stochastic simulation:** Numerical mathematical method of solving complex problems, which was founded in Los Alamos (Metropolis and Ulam, 1949).
- **Optimization:** Mathematical methodology for locating the values of variables that maximize or minimize a function. In combination with simulation, it constitutes the rational basis for the design and management of reservoirs.
- **Hurst-Kolmogorov dynamics or long-term persistence:** Stochastic-dynamic behaviour that characterizes natural (as well as socio-economical and technological) processes. It is required to consider it in the design and management of reservoirs.
- **Generation of synthetic samples:** While stochastic simulation of a system is in principle possible if there is a time series of observations with adequate lengths, in most problems observation periods are too short to base reliable results; therefore we resort to generating synthetic samples, which must have specified properties.

“Classical” methodology (Anglo-Saxon School)

- **Ripple (1883)** Method of mass (cumulative) inflow-outflow curves: graphical method of reservoir design, based on the historical sample of inflows.
- **Hurst (1951)** Statistical study of the concept of *range* for reservoir design and its dependence on sample size. Important is the discovery of the eponymous behaviour.
- **Thomas and Burden (1963)** Sequent-peak method: tabulated version of Ripple’s method.
- **Schultz (1976)** (perhaps anticipated by others) A variant of Ripple’s method using synthetic (instead of observed) time series.
- The Anglo-Saxon School’s methods, in spite of dominating in engineering education and handbooks for practitioners, do not have scientific consistency.

For more information on the chronicle of related research, see comprehensive review by Klemes (1987)

Systems-based methodology

- **Required:** Determination of the minimum net storage reservoir capacity c , so as to satisfy a constant demand δ , given an inflow time series x_t for a specific control horizon of length n , and an initial storage s_0 .
- **Control variables:** Storage capacity c , (net) storage s_t and losses due to spill w_t for n time steps ($2n + 1$ variables in total).
- **Mathematical formulation as a linear programming problem:**
 - minimize $f = c$
 - subject to $s_t = s_{t-1} + x_t - d - w_t$ for each $t = 1, \dots, n$ (water balance)
 - $s_t \leq c$ for each $t = 1, \dots, n$
 - $s_n = s_0$ (steady state condition)
 - $c, s_t, w_t \geq 0$
- **Disadvantages:**
 - Very big number of control variables.
 - Inability to incorporate nonlinear relationships.
 - Fully deterministic formulation – reliability is not considered.

Stochastic methodology (Russian School)

- **Hazen (1914)** (American!) Introduction of the reliability concept and the SYR relationship.
- **Kritskiy & Menkel (1935, 1940) and Savarenskiy (1940)** Theoretical study and materialization of a practical methodology for reservoir desing based on reliability and the SYR relationship.
- **Pleshkov (1939)** Construction of nomographs for facilitating practical application of the method.
- **Kolmogorov (1940)** Proposal of a mathematical model that represents the behaviour to be discovered 10 years after by Hurst. Kolmogorov was not involved in reservoir studies but with turbulence.
- **Moran (1954)** (Australian) Reinvention (perhaps independent) of the stochastic theory of reservoirs.
- Most of these contributions, although theoretically consistent, often involve unrealistic assumptions, such as the independence of inflows over time, which make them unsatisfactory in practice.

For more information see Klemes (1987)

Which School is followed in Greece?

- Technical Universities mostly teach Anglo-Saxon methods.
- However, consultants have been aware of the Russian School's methods and have applied them in real-world studies.

Final design of the Iasmos dam (1971)

Ένταῦθα ὡς καὶ ἐν τῇ ἐγκριμένη προμελετῇ ἐρευνᾶται ἡ μεταβολὴ τῆς χρησίου χωρητικότητος διὰ διαφορὰς ἀπολήψεις ἀφ' ἑνὸς μὲν βάσει τῶν κλασσικῶν μεθόδων μελέτης τῶν χρησίων ἀθροιστικῶν καμπῶν τῶν διαφορῶν ἀφ' ἑτέρου δὲ διὰ στατιστικῶν μεθόδων ἵνα ληφθῇ ὑπ' ὅψιν μακροχρόνιος καὶ τυχαία διαδοχὴ τῶν συρροῶν. Πρὸς τοῦτο ἐχρησιμοποιήσαμεν τὴν αὐτὴν μέθοδον τὴν ἐφαρμοσθεῖσαν εἰς τὴν ἐγκριμένην προμελέτην ἥτοι τῶν KRITZKE καὶ MENKTEL συμπληρωθεῖσαν ὑπὸ τοῦ PLESCHKOW. Ἐν συνεχείᾳ προβαλόμεν εἰς τὸν ὑπολογισμὸν τοῦ ὠφέλιμου ὄγκου τοῦ ταμειυτήρος. Ἡ ἀκολουθηθεῖσα μέθοδος εἶναι ὡς καὶ ἄνωτέρω ἐλέγχθη ἡ αὐτὴ μετὰ τὴν τῆς προμελέτης, ἣν καὶ ἐν περιλήψει περιγράφομεν κατωτέρω.

Ἀθήναι, Ἰούλιος 1971

Συντάξαντες: Δ. Χριστοδῶλας - Γ. Νουτσόπουλος - Λ. Λαζαρίδης - Χ. Καπετανάκης

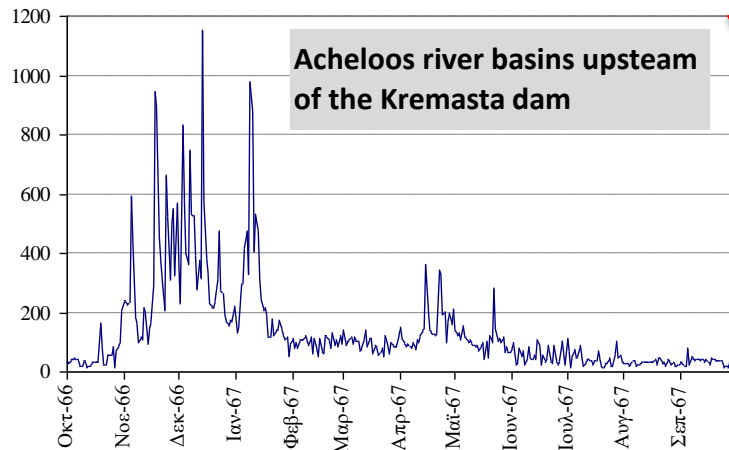
οἱ ἀναδοχοὶ

Δ. ΦΡΑΓΚΙΔΑΚΗΣ
Γ. ΚΑΡΑΒΟΚΥΡΗΣ
Ι. ΔΑΟΥΤΗΣ
Ι. ΕΥΘΥΜΙΑΤΟΣ
Δ. ΧΡΙΣΤΟΥΛΑΣ
Γ. ΝΟΥΤΣΟΠΟΥΛΟΣ
Λ. ΛΑΖΑΡΙΔΗΣ
Χ. ΚΑΠΕΤΑΝΑΚΗΣ

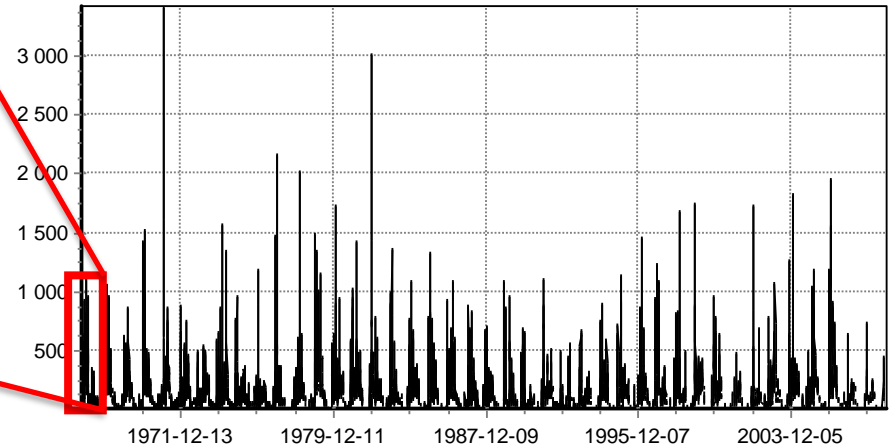
Differences in the behaviour of hydrological processes from that in simple random events

Roulette wheel	River discharge
Discrete and finite set of possible values, $\{0, 1, \dots, 36\}$	Infinite and continuous set of possible values, from 0 to $+\infty$. The rate with which a value tends to $+\infty$, for probability tending to 0, is not the minimum possible (Noah phenomenon)
Constant behaviour in time	Changing behaviour in time (regular seasonal changes—irregular changes in other time scales)
<i>A priori</i> known probability of occurrence of each value (1/37)	<i>A priori</i> unknown probability distribution function which needs observations to infer
Each outcome does not depend of the previous ones	Each value depends on all history of previous values (persistence)

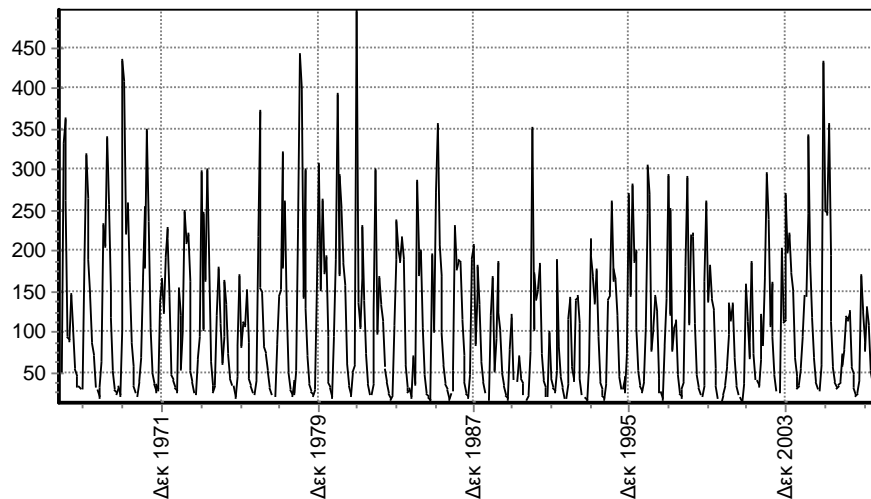
Change at different time scales in hydrological processes



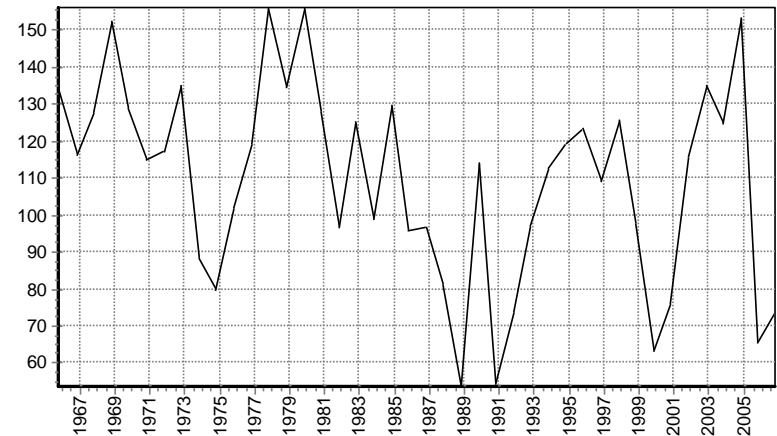
Mean daily discharge, hydrological year 1966-67 (m^3/s)



Mean daily discharge, 1966-2008 (m^3/s)



Mean monthly discharge, 1966-2008 (m^3/s)



Mean annual discharge 1966-2008 (m^3/s)

Difference in determination of probability of composite events

- Example for roulette wheel:
What is the probability that in two consecutive throws the outcome be equal or smaller than 3?

Reply:
 $(4/37)^2$

- Analogous example for streamflow:
If:
 - (a) we characterize as dry any year in which the annual streamflow volume is less than or equal to 3 km^3 , and
 - (b) we know that the probability of a dry year is $1/10$,what is the probability that two consecutive years are dry?

Reply:
We need stochastic simulation to determine it

Scientific disciplines to enroll in order to reply the previous question

1. **Probability theory:** Foundation of calculations.
2. **Statistics:** Inference from data or induction: (estimation of probability distribution function from the sample of observations).
3. **Theory of stochastic processes:** Mathematical description of (random) variables changing in time and their dependences.
4. **Simulation:** Numerical method that uses sampling to tackle difficult problems.

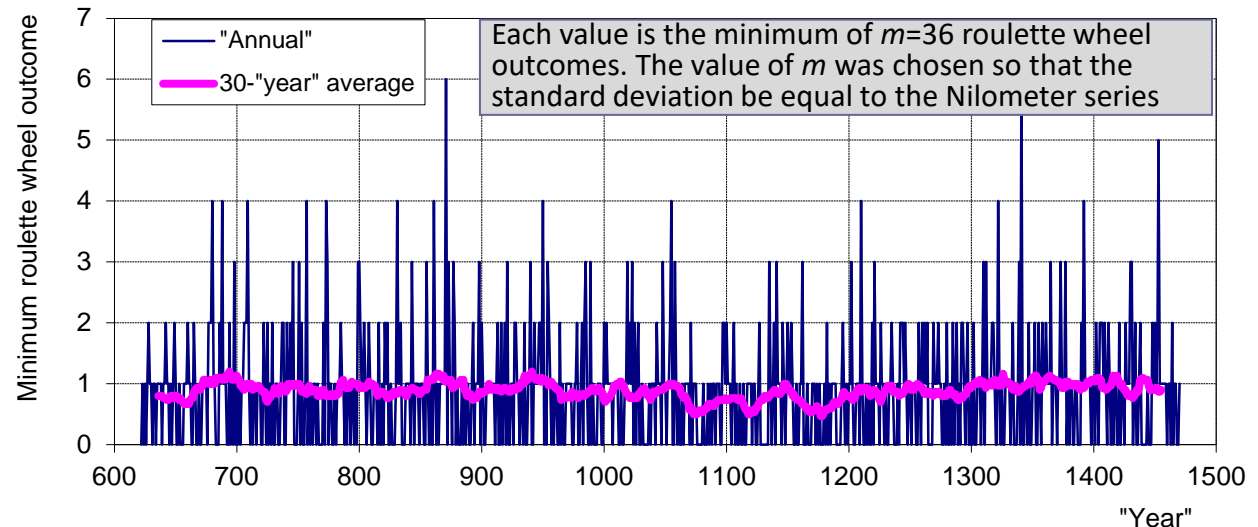
All these are now known with the collective name *Stochastics*

History of stochastic simulation (or Monte Carlo method)

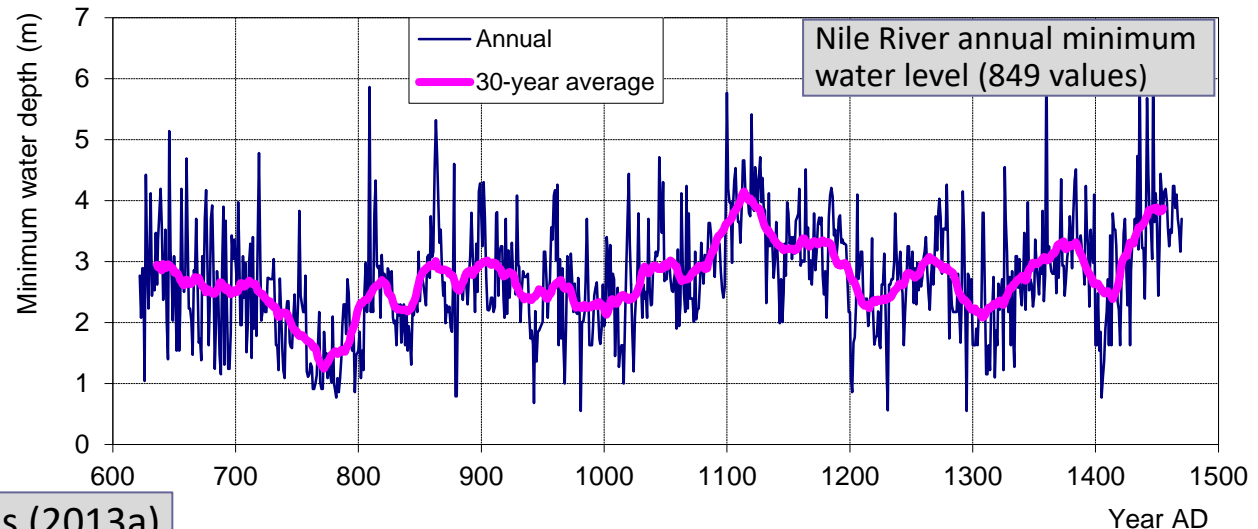
- It is connected to the development of mathematics and physics in the mid-20th century as well as the development of computers.
- It was devised by the Polish mathematician Stanislaw Ulam (working in the Los Alamos team) in 1946 (Metropolis, 1989, Eckhardt, 1989).
- Immediately after, the method was used to solve neutron collision problems from the physicists and mathematicians in Los Alamos (John von Neumann, Nicholas Metropolis, Enrico Fermi) after being encoded in the first ENIAC computer.
- The "official" story of the method begins with the publication of Metropolis and Ulam (1949).
- Since the 1970s simulation has been used in water resource problems (although the first steps were taken in the 1950s - Barnes, 1954).
- Research on stochastic methods in water resources continues and grows.

Perpetual change as seen in the Nilometer record - The Hurst-Kolmogorov behaviour

Purely random



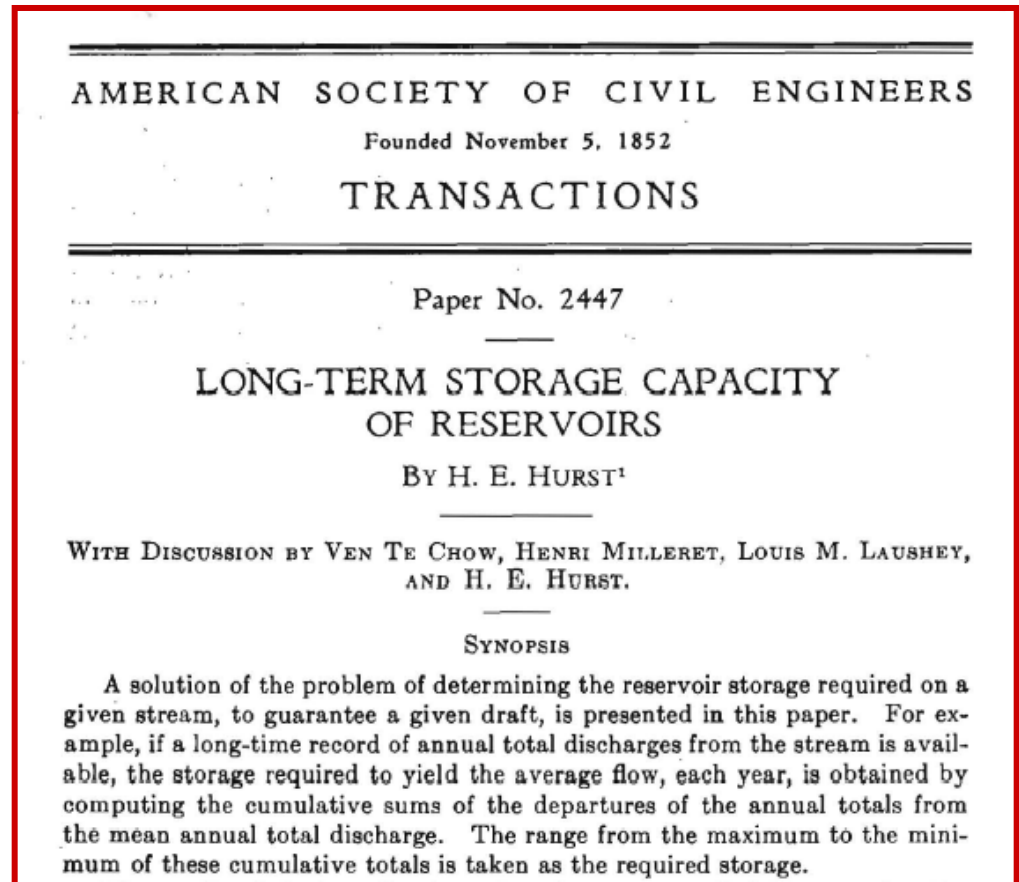
Structured
random



Nilometer data: Koutsoyiannis (2013a)

Hurst's (1951) seminal paper

- The motivation of Hurst was the design of the High Aswan Dam on the **Nile** River.
- However the paper was theoretical and explored numerous data sets of diverse fields.
- Hurst observed that:
Although in random events groups of high or low values do occur, their tendency to occur in natural events is greater. This is the main difference between natural and random events.



Obstacles in the dissemination and adoption of Hurst's finding:

- ❑ Its direct connection with reservoir storage.
- ❑ Its tight association with the Nile.
- ❑ The use of a complicated statistic (the rescaled range).

Kolmogorov (1940)

- Kolmogorov studied the stochastic process that describes the behaviour to be discovered a decade later in geophysics by Hurst.
- The proof of the existence of this process is important, because several researches, ignorant of Kolmogorov's work, regarded Hurst's finding as inconsistent with stochastics and as numerical artefact.

Comptes Rendus (Doklady) de l'Académie des Sciences de l'URSS
1940. Volume XXVI, № 2

MATHEMATIK

WIENERSCHE SPIRALEN UND EINIGE ANDERE INTERESSANTE KURVEN IM HILBERTSCHEN RAUM

Von A. N. KOLMOGOROFF, Mitglied der Akademie

Wir werden hier einige Sonderfälle von Kurven betrachten, denen meine vorhergehende Note «Kurven im Hilbertschen Raum, die gegenüber einer einparametrischen Gruppe von Bewegungen invariant sind» ⁽¹⁾ gewidmet ist.

Unter einer Ähnlichkeitstransformation im Hilbertschen Raum H werden wir eine beliebige

$\neq x$ der Punkte, die auf derselben Kurve liegen, übergeht.

Satz 6. Die Funktion $B_{\xi}(\tau_1, \tau_2)$, die der Funktion $\xi(t)$ der Klasse \mathfrak{A} entspricht, kann in der Form

$$B_{\xi}(\tau_1, \tau_2) = c [|\tau_1|^Y + |\tau_2|^Y - |\tau_1 - \tau_2|^Y]$$

115

- Kolmogorov's work did not become widely known.
- The process was named by Kolmogorov "Wiener's Spiral" (Wienersche Spiralen) and later "Self-similar process", or "fractional Brownian motion" (Mandelbrot and van Ness, 1968).
- Today it is called the **Hurst-Kolmogorov (HK) process**.

The Hurst-Kolmogorov (HK) process and its multi-scale stochastic properties

A natural process evolves in continuous time, t :

$$x(t)$$

We model it as a stochastic process in continuous time, t :

$$\underline{x}(t)$$

... but we observe and study it by taking averages in discrete time $i = 1, 2, \dots$, for a convenient time scale k :

$$\underline{x}_i^{(k)} := \int_{(i-1)k}^{ik} \underline{x}(t) dt$$

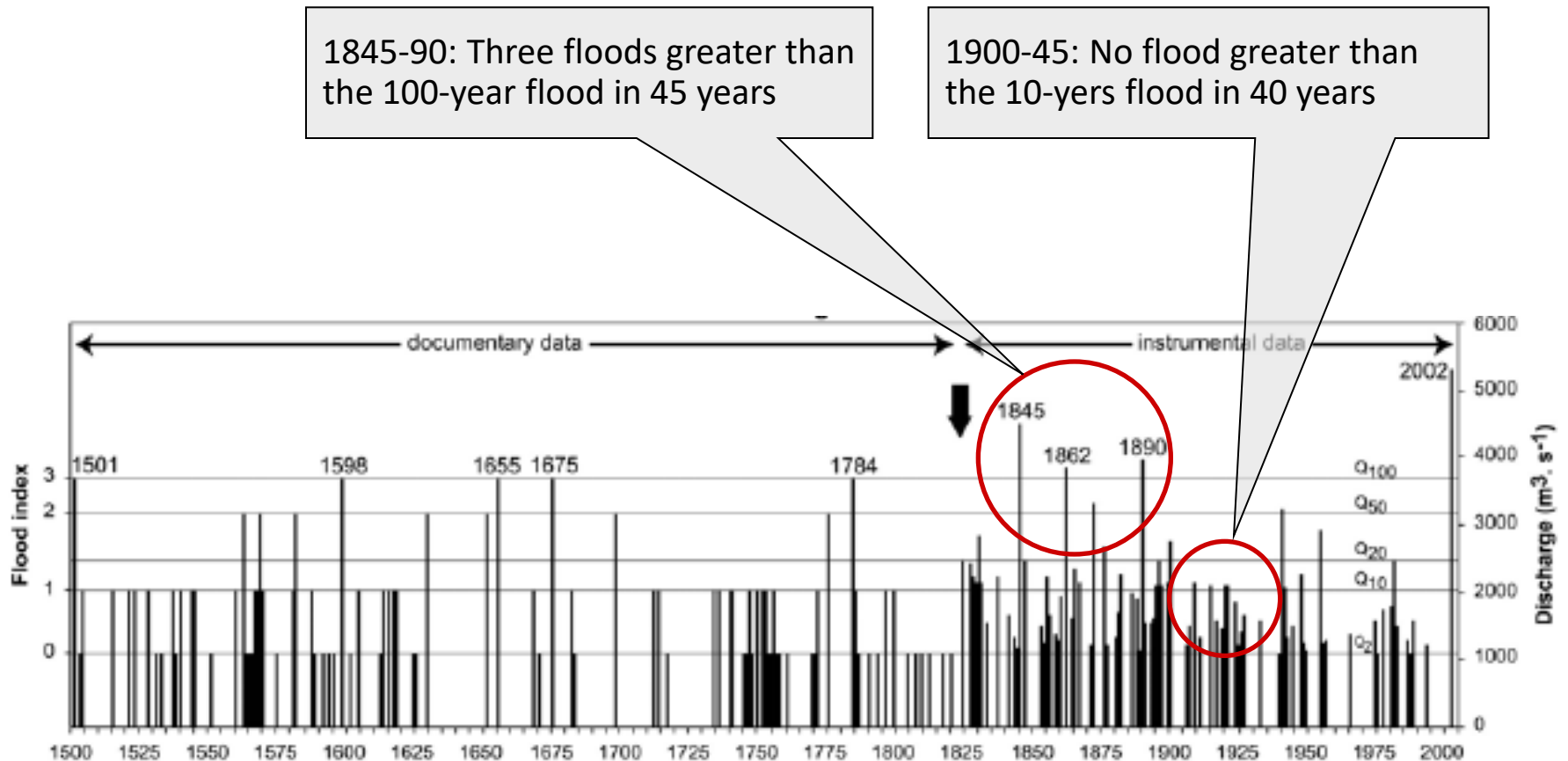
Properties of the HK process	At an arbitrary observation scale $k = 1$ (e.g. annual)	At any scale k
Standard deviation	$\sigma \equiv \sigma^{(1)}$	$\sigma^{(k)} = \sigma / k^{1-H}$ (can serve as a definition of the HK process; H is the Hurst coefficient; $0.5 < H < 1$)
Autocorrelation function (for lag j)	$\rho_j \equiv \rho_j^{(1)} = \rho_j^{(k)} \approx H(2H-1) j ^{2H-2}$	
Power spectrum (for frequency ω)	$s(\omega) \equiv s^{(1)}(\omega) \approx 4(1-H)\sigma^2(2\omega)^{1-2H}$	$s^{(k)}(\omega) \approx 4(1-H)\sigma^2 k^{2H-2} (2\omega)^{1-2H}$

In classical statistics
 $\sigma^{(k)} = \sigma/\sqrt{k}$

All equations are power laws of scale k , lag j , frequency ω

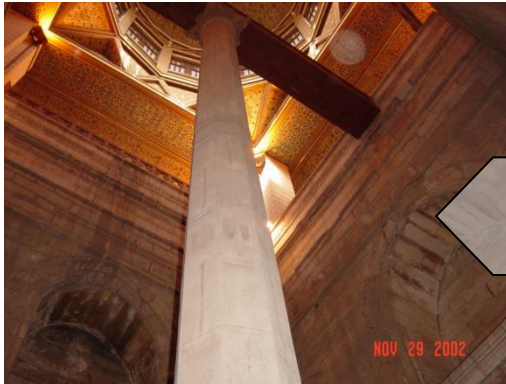
For detailed descriptions see Koutsoyiannis (2002, 2013)

Example 1: Clustering of floods



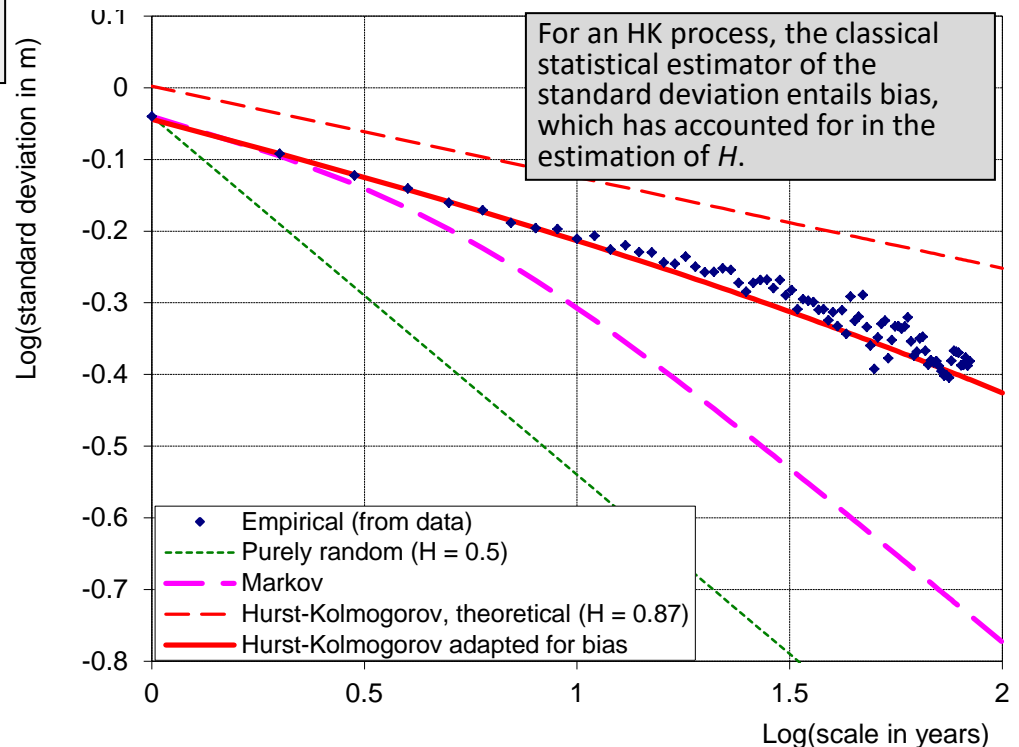
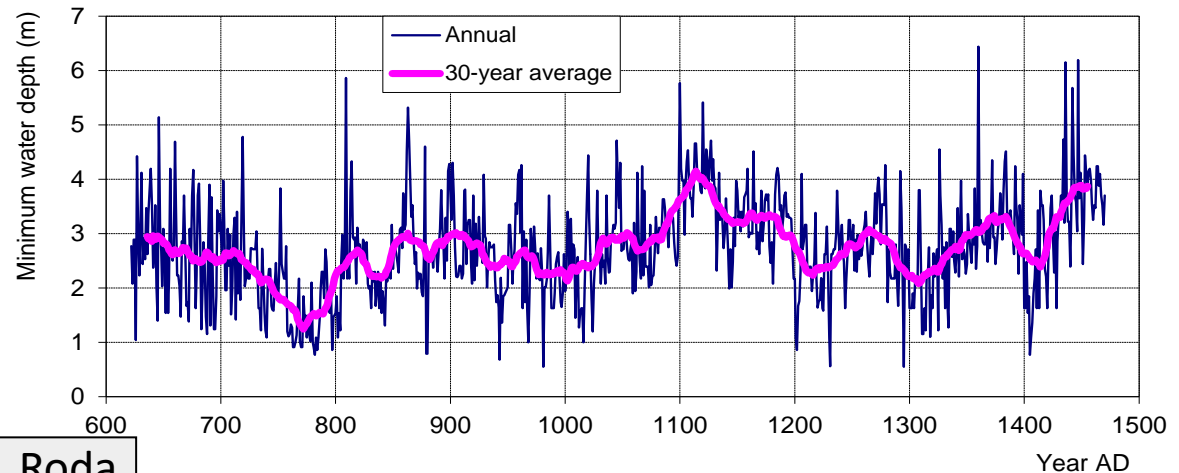
Flood discharges of the Vltava river in Prague in the last 5 centuries (Brázdil et al., 2006)

Example 2: Annual minimum water levels of the Nile

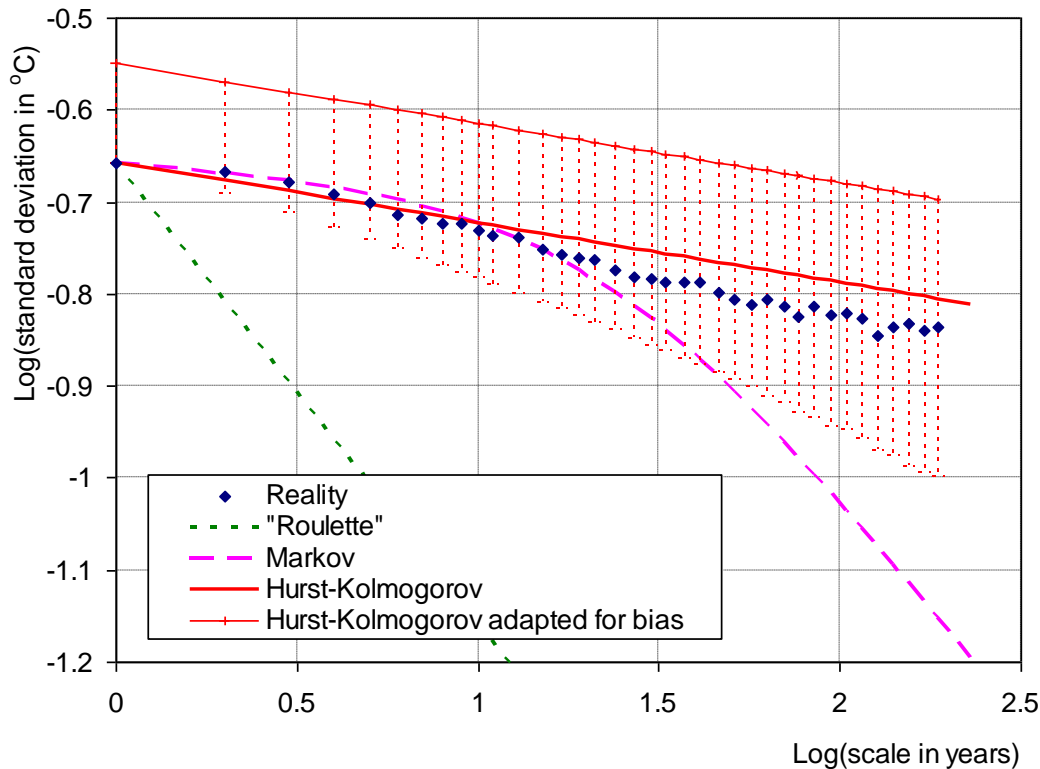
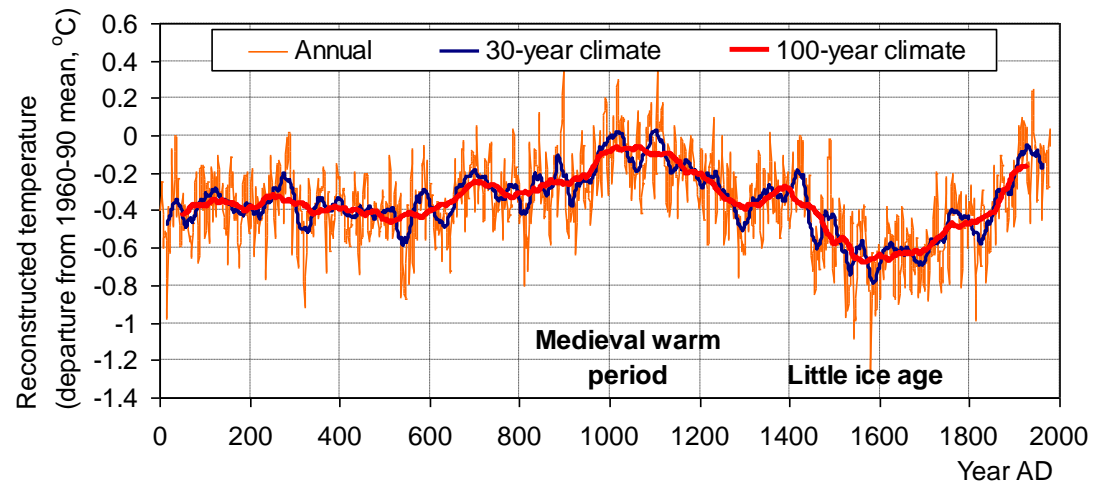


Roda
Nilometer

- The longest time series of observations available (849 years).
- Hurst parameter $H = 0.87$.
- A similar value of H is found from the simultaneous time series of maximum water levels and from a modern time series of annual discharge of Nile at Aswan (131 years).



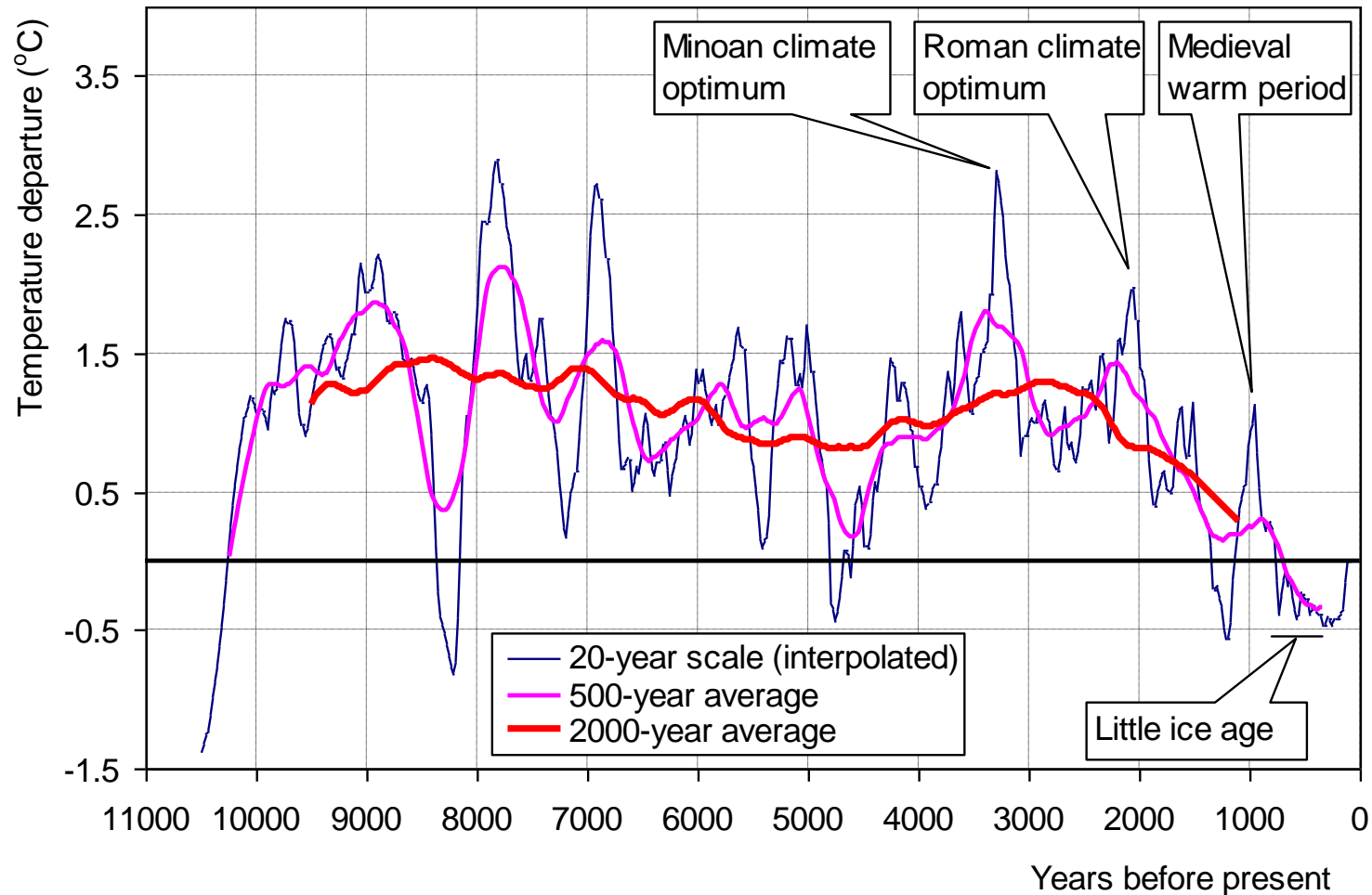
Example 3: The Moberg et al. proxy series of the Northern Hemisphere temperature



Suggests an HK behaviour with a very high Hurst coefficient: $H = 0.94$.

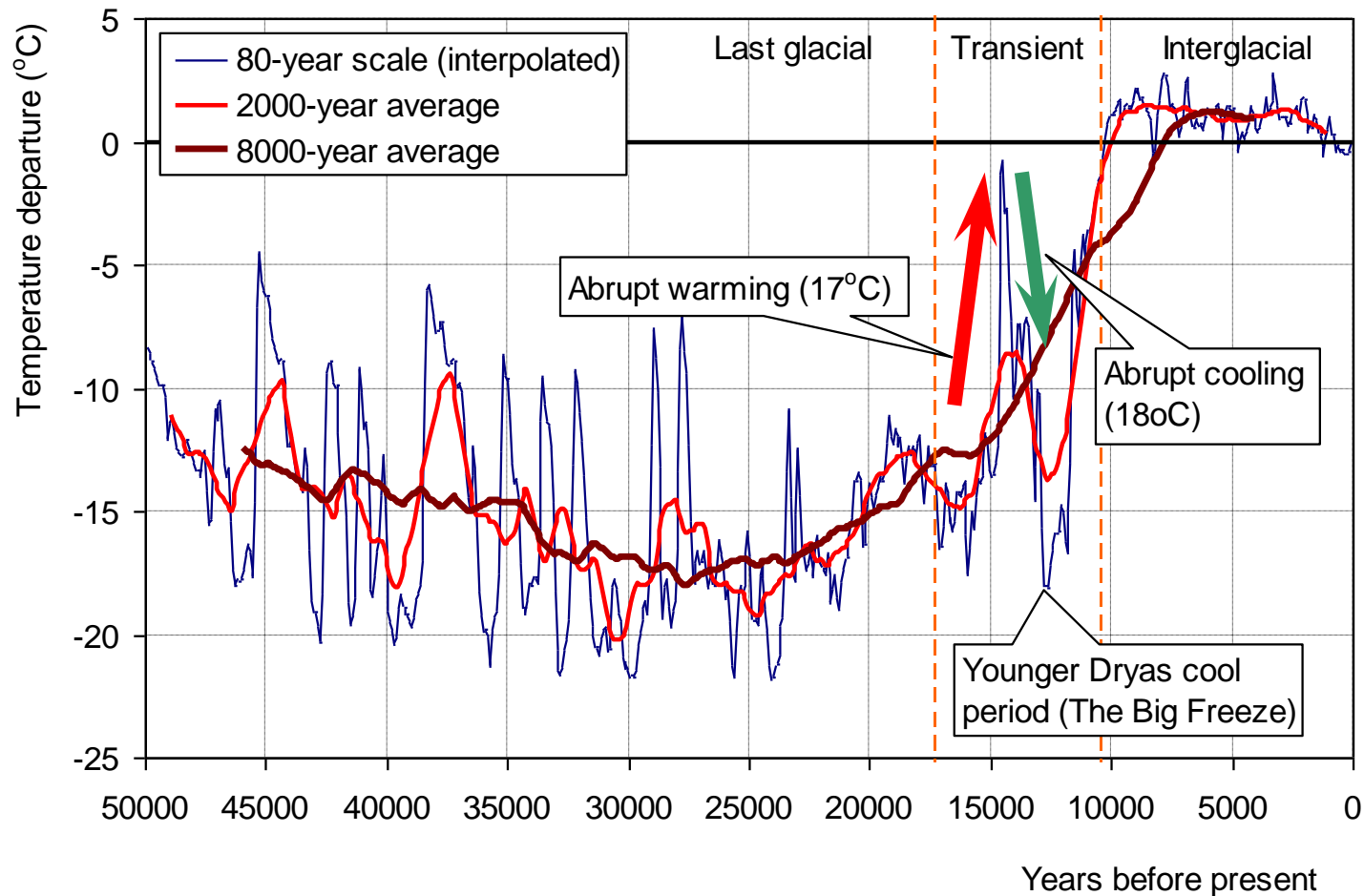
Estimation bias was determined by Monte Carlo simulation (200 simulations with length equal to the historical series).

Example 4: The Greenland temperature proxy during the Holocene



Reconstructed from the GISP2 Ice Core (Alley, 2000, 2004). Data from:
ftp.ncdc.noaa.gov/pub/data/paleo/icecore/greenland/summit/gisp2/isotopes/gisp2_temp_accum_alley2000.txt

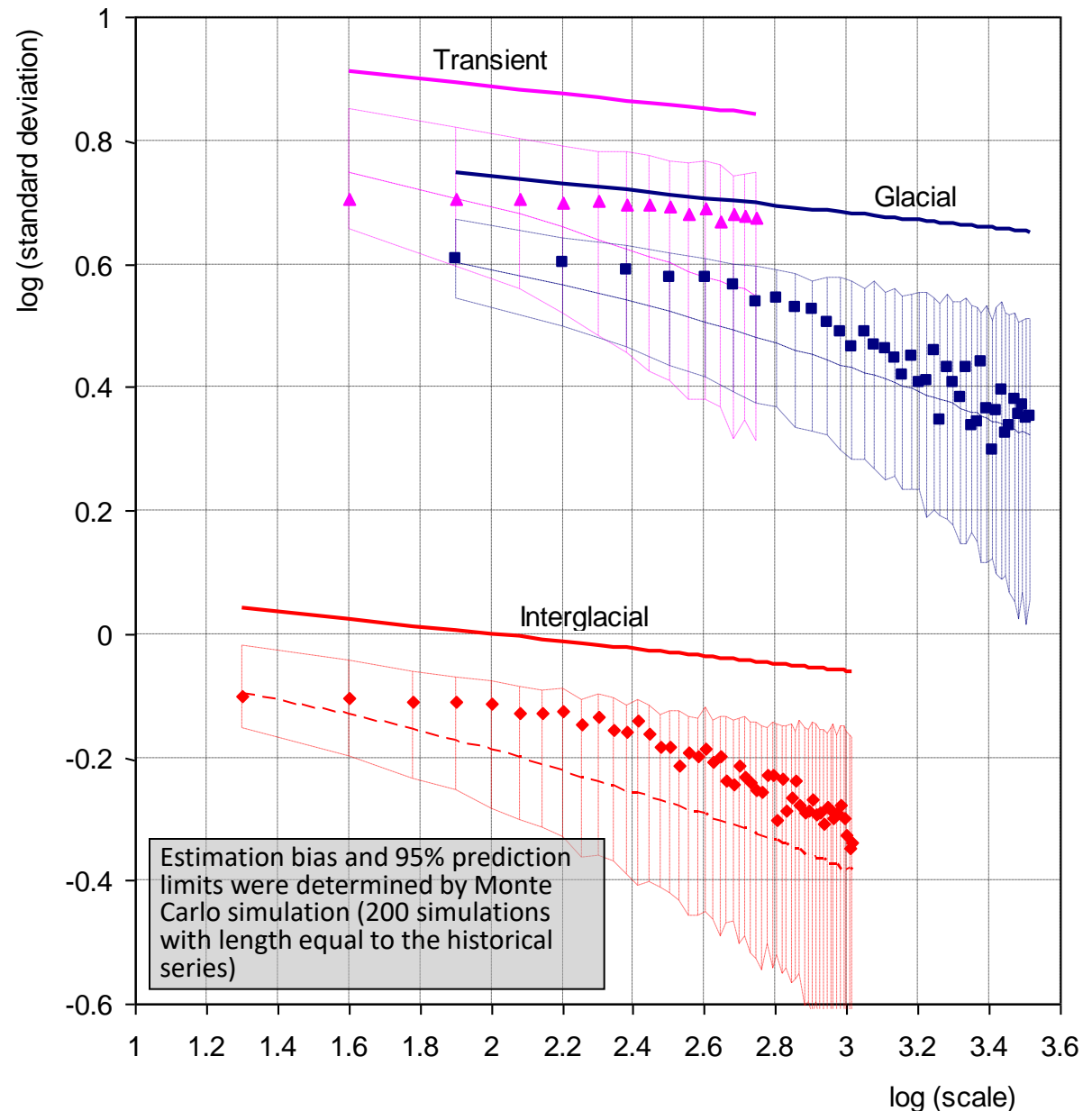
Example 4 (cont.): The Greenland temperature proxy on multi-millennial time scales



Reconstructed from the GISP2 Ice Core (Alley, 2000, 2004). Data from:
ftp.ncdc.noaa.gov/pub/data/paleo/icecore/greenland/summit/gisp2/isotopes/gisp2_temp_accum_alley2000.txt

Example 4 (cont.): The Greenland temperature proxy on all scales

All three periods
suggest an HK
behaviour with a
very high Hurst
coefficient:
 $H \approx 0.94$.



What we avoid in reservoir design

- Deterministic methods or pseudo-stochastic variants thereof (the Anglo-Saxonic methodology).
- Stochastic simulation methods that do not reproduce Hurst-Kolmogorov dynamics.
- Software applications that are based on the above methods.

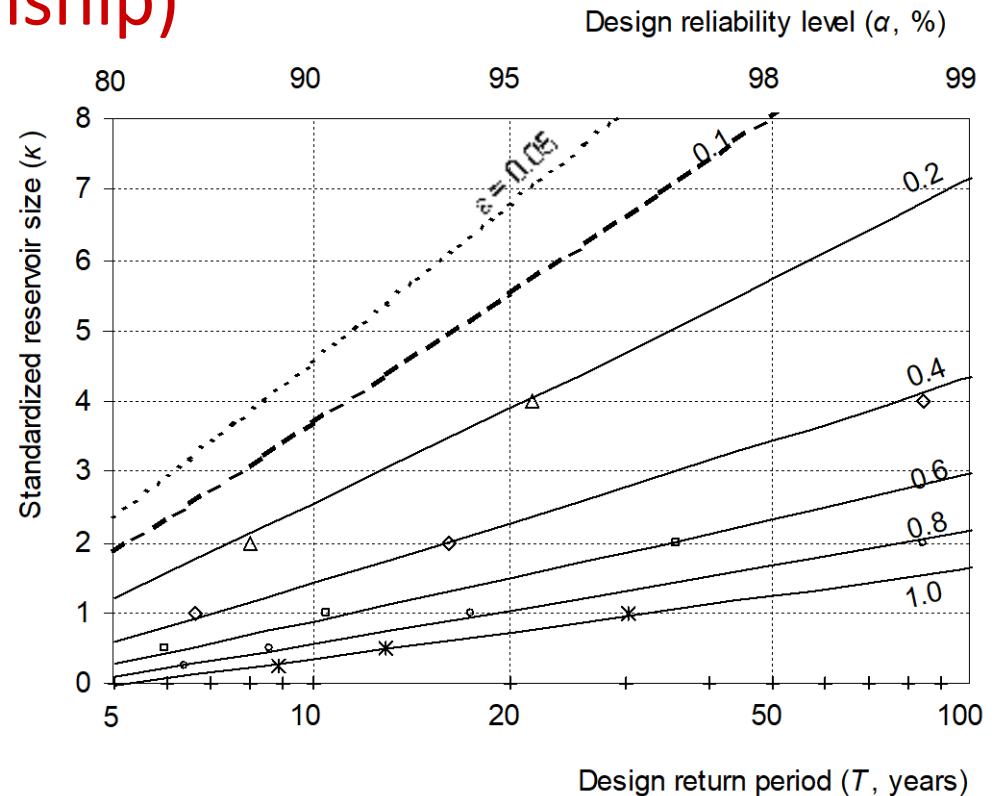
What we do for a preliminary reservoir design

1. We construct a SYR relationship from historical observations—if the record length is satisfactory.
 - Calculations are very simple and need only the water balance equation in the form:
$$\underline{s}_t = \max[0, \min(\underline{s}_{t-1} + \underline{x}_t - \delta_t, c)],$$
where \underline{s}_t is the storage at time t , \underline{x}_t the net inflow δ_t the water demand t , and c the storage capacity. A failure is counted when $\underline{s}_t = 0$.
 - The computational framework of a spreadsheet (OpenOffice, Excel) is enough.
2. We construct a «lower envelope» SYR relationship based on standardized relationships, expressed in terms of nomographs or equations and based on stochastic simulation.
 - The results give the storage capacity required for long-term (over-annual) regulation. An additional storage of about 50%-80% of annual demand must be added for sub-annual regulation (the higher percentage corresponds to irrigation reservoirs).
3. We estimate the design storage capacity by optimization considering technical, economical, and environmental data.

Typical results of the consistent method (storage-yield-reliability relationship)

Characteristic quantities

- μ : mean inflow
- σ : standard deviation of inflow
- a : reliability
- $T := 1 / (1 - a)$: return period of reservoir emptying
- δ : demand
- c : reservoir storage capacity
- $\kappa := c / \sigma$: standardized reservoir storage capacity
- $\varepsilon := (\mu - \delta) / \sigma$: standardized mean loss



Assumptions

- Annual time scale (seasonal variation neglected) with constant withdrawal rate.
- Inflows independent identically and distributed with normal distribution.

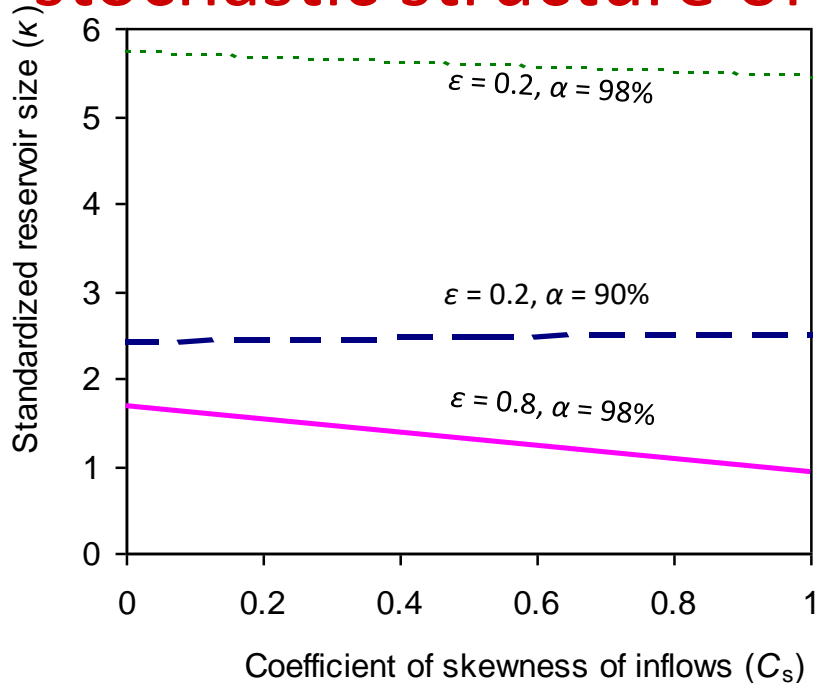
Results (for $T > 2$ or $a > 0.5$)

$$\ln(T - 1) = 2 (\varepsilon + 0.25) (\kappa + 0.5)^{0.8} \quad \text{or}$$

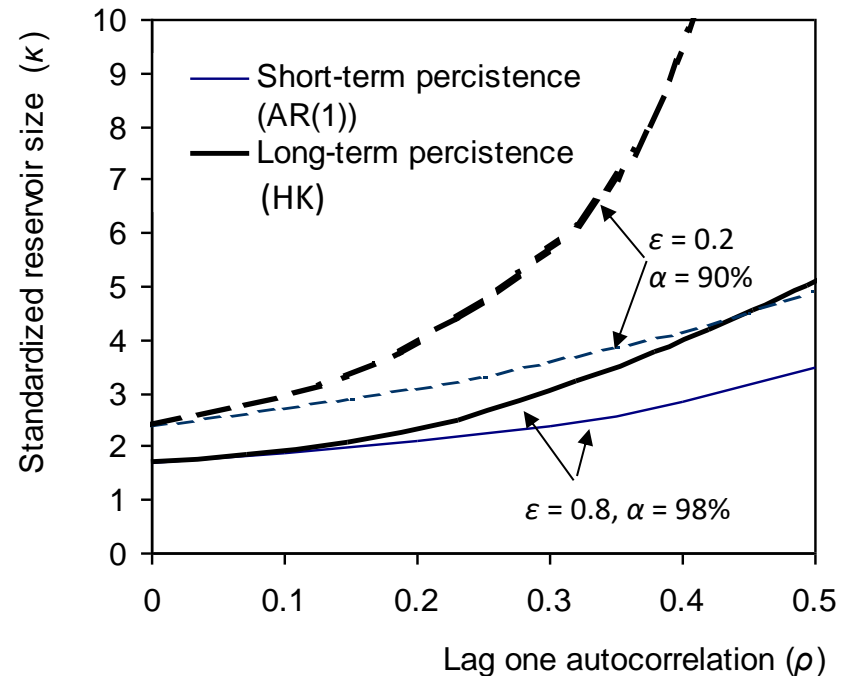
$$\ln(T - 1) = -\ln(1/\alpha - 1) = (2/\sigma^{1.8}) (\mu + 0.25\sigma - \delta) (\lambda + 0.5\sigma)^{0.8}$$

For details see
Koutsoyiannis (2005)

Extensions of results for more complex stochastic structure of inflows



Effect of skewness (Results for independent gamma distributed inflows)



Effect of persistence (Results for normally distributed inflows)

- While the case presented is simple, the method is fully generic and can perform with any type of system dynamics and stochastic structure of inflows.
- While there exist in the literature different approaches (e.g. the formulation by Moran, 1954, based on Markov chains, as well as recent attempts) these involve radical simplifications (e.g. discretization of the reservoir space) and their usefulness is questionable.
- For details see Koutsoyiannis (2005).

What we do for a final reservoir design

1. We construct a SYR curve as in step 1 of the preliminary design but now using a synthetic time series (with length of thousand of years) in monthly time scale.
 - The synthetic time series should be generated with a method that reproduces HK dynamics.
 - The simplest methods with HK dynamics are those by Koutsoyiannis (2003) and Langousis & Koutsoyiannis (2006); these can easily be materialized in spreadsheets (OpenOffice, Excel).
 - More sophisticated methods require appropriate software applications (e.g. *Castalia*).
2. We estimate the design storage capacity by optimization considering technical, economical, and environmental data.HK

Algorithmic application of simulation: Introduction to random numbers

- A *sequence of random numbers* is a sequence of numbers x_i whose every one statistical property is consistent with realizations from a sequence of independent identically distributed random variables \underline{x}_i (adapted from Papoulis, 1990).
- A *random number generator* is a device (typically computer algorithm) which generates a sequence of random numbers x_i with given distribution $F(x)$.
- Random number generation is also known as Monte Carlo sampling.
- Most algorithms are purely deterministic, and generate the same sequence of numbers if we start from the same initial condition, often referred to as *seed*. If we change the seed we get another sequence (more precisely another part of a periodic sequence with very large period). Yet the numbers are random because if we do not know the algorithm and the initial condition (q_0 or q_{i-1}) we cannot predict these numbers.

Generation of independent random numbers with specified distribution function

- The basis of practically all random generators is the uniform distribution in $[0,1]$. A typical procedure is the following:
 - We generate a sequence of integers q_i from the recursive algorithm $q_i = (kq_{i-1} + c) \bmod m$ where k , c and m are appropriate integers (e.g. $k = 69\,069$, $c = 1$, $m = 2^{32} = 4\,294\,967\,296$ or $k = 7^5 = 16\,807$, $c = 0$, $m = 2^{31} - 1 = 2\,147\,483\,647$; Ripley, 1987, p. 39).
 - We calculate the sequence of random numbers u_i with uniform distribution in $[0,1]$ by $u_i = q_i/m$.
- For any probability distribution $F(x)$ the following procedure works always (but sometimes is time demanding):
 - If $F^{-1}(\cdot)$ is the inverse function of $F(x)$ and u_i are random numbers with uniform distribution in $[0, 1]$, then the required random numbers are given by

$$w_i = F^{-1}(u_i)$$

In spreadsheets, the function `rand()` generates random numbers with uniform distribution in $[0,1]$ and the function `normsinv(rand())` generates random numbers with normal distribution $N(0, 1)$.

Generation of random numbers from the HK process; the Symmetric Moving Average Method

The symmetric moving average (SMA) scheme, introduced by Koutsoyiannis (2000), transforms a sequence of independent random numbers (white noise) \underline{v}_j to a sequence of dependent ones \underline{x}_j using the equation

$$\underline{x}_j = \sum_{j=-q}^q a_{|j|} \underline{x}_{j+j} = a_q \underline{v}_{j-q} + \dots + a_1 \underline{v}_{j-1} + a_0 \underline{v}_j + a_1 \underline{v}_{j+1} + \dots + a_q \underline{v}_{j+q}$$

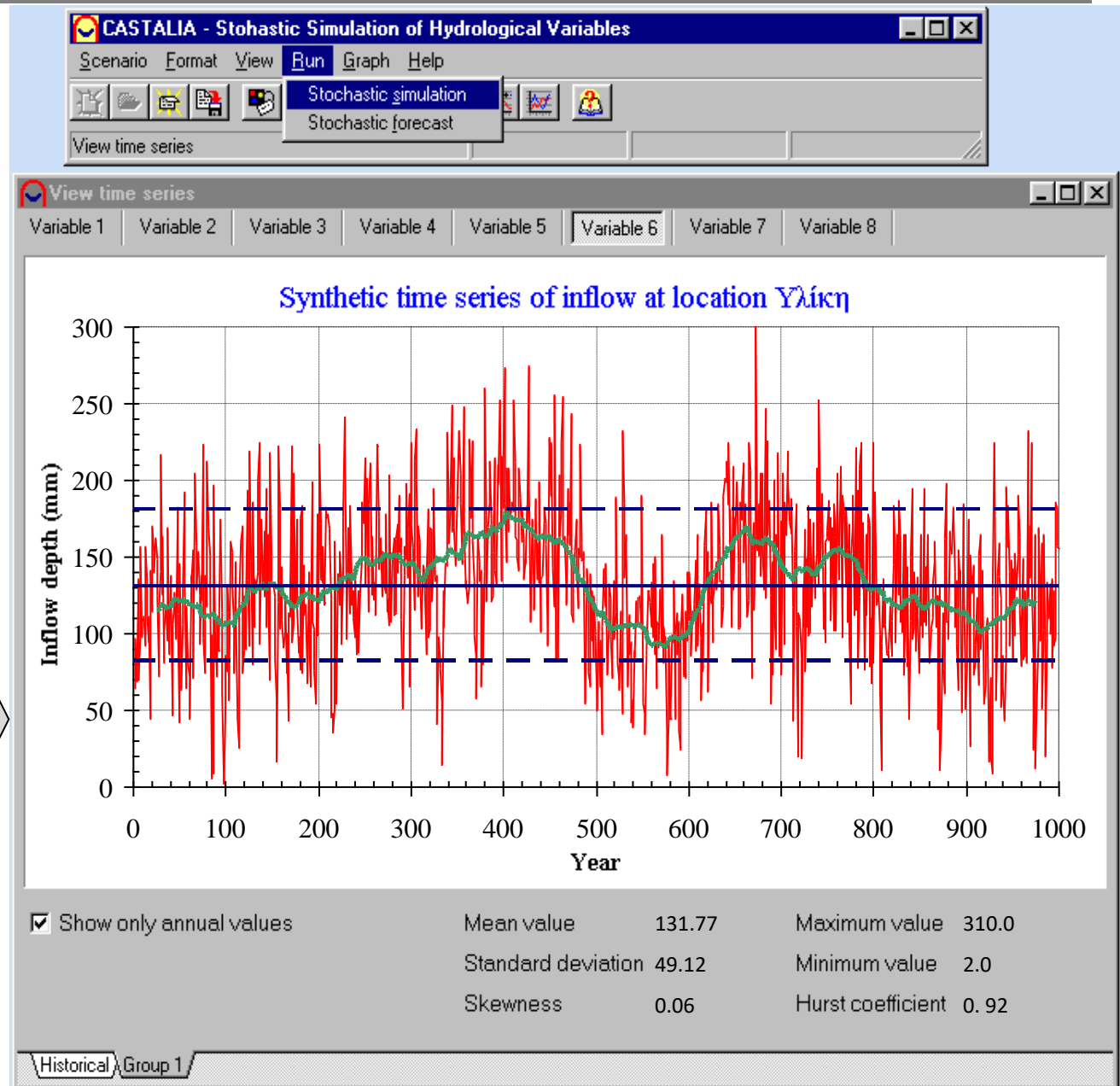
where a_j are weights whose number q is theoretically infinity but in practice is chosen finite with a large value.

In the case of the HK process (else known as fractional Gaussian noise—FGN) it is shown (Koutsoyiannis, 2002) that the weights are:

$$a_j \approx \frac{\sqrt{(2-2H)\gamma_0}}{3-2H} [|j+1|^{H+0.5} + |j-1|^{H+0.5} - 2|j|^{H+0.5}]$$

Generation of synthetic samples using the *Castalia* software

A synthetic series with length of 1000 years for inflows at lake Hylike

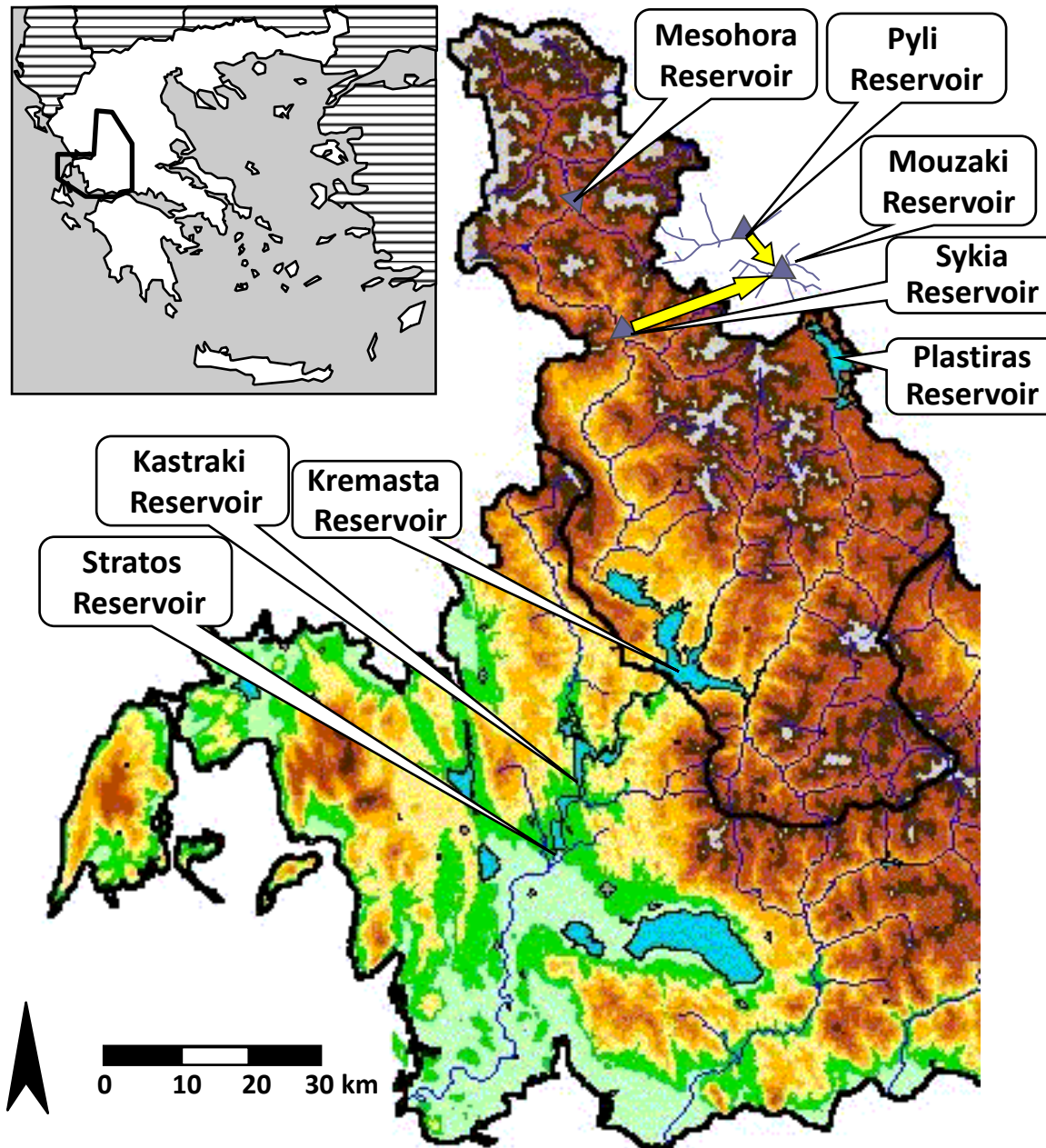


The need for redesign and adaptation of management

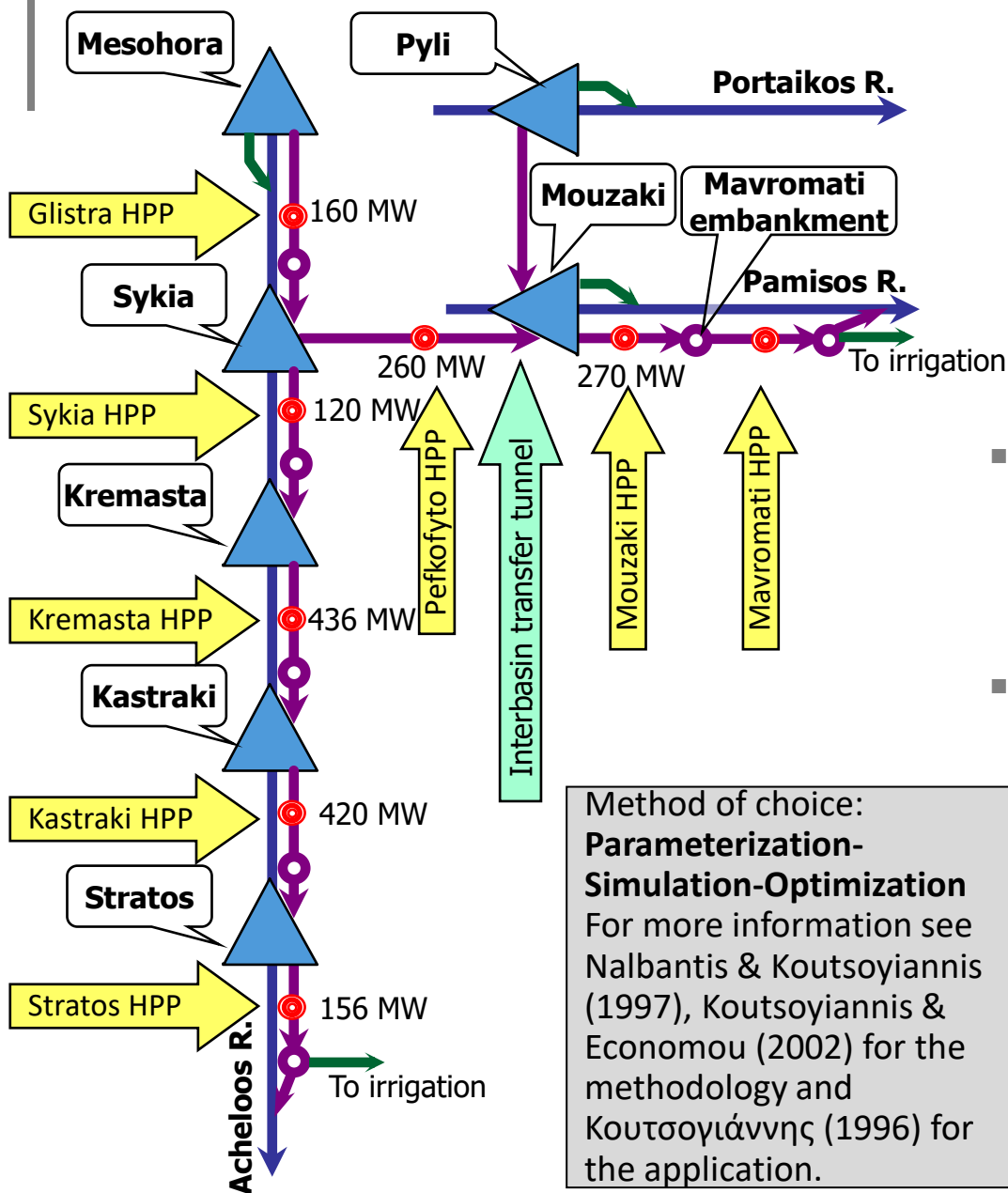
- In a first stage, several reservoirs are designed as individual hydraulics works of a single purpose.
- In the course of their operation, increased needs require that they be complemented by new projects.
 - Characteristic example: Evinos projects to boost water supply to Athens from Mornos.
 - New projects were studied from the outset as components of a system rather than as individual projects (system redesign).
- In other cases, changes in social and economic priorities make it necessary to adapt their management to new (multiple) purposes.
 - Typical example: Plastiras Reservoir (Phase 1: Energy, Phase 2: Irrigation + Water supply + Energy, Phase 3: Ecotourism + Water Supply + Irrigation + Energy)
 - The new management policy recognizes the need for a minimum ecological limit on the level of the reservoir without neglecting the importance of water supply and the economic and social benefit of irrigation and energy.

See details in Koutsoyiannis et al. (2003), Christofides et al. (2005) and Koutsoyiannis (2011).

Example: The Acheloos hydropower and irrigation hydrosystem



- 5 reservoirs in Acheloos river system
- 2 additional reservoirs at the Thessaly area
- 1 more reservoir (Plastiras) out of the system
- 8 hydropower stations
- Conveyance network
- Main water use: Energy production
- Secondary water uses: Irrigation, Water supply
- Environmental constraints



Example: The Acheloos hydrosystem structure

- Irrigation requirements
 - Main irrigation nodes at Stratos and Mavromati (450 and 600 hm³ per year, respectively)
 - Local demand 4 hm³ per year at Pyli
- Environmental constraints
 - Minimum environmental preservation discharge at Acheloos river 1.5 m³/s downstream of Mesohora, 5 m³/s downstream of Sykia and 21 m³/s at the estuary
 - Minimum discharge downstream of Pyli and Mouzaki 0.15 m³/s
 - Additional 0.35 m³/s downstream of Pyli for the aquifer recharge

References

- Alley, R.B, The Younger Dryas cold interval as viewed from central Greenland, *Quaternary Science Reviews*, 19, 213-226, 2000.
- Alley, R.B., GISP2 Ice Core Temperature and Accumulation Data, IGBP PAGES/World Data Center for Paleoclimatology Data Contribution Series #2004-013, NOAA/NGDC Paleoclimatology Program, Boulder CO, USA, 2004.
- Barnes, F. B., Storage required for a city water supply, *J. Inst. Eng. Australia*, 26(9) 198-203, 1954.
- Brázdil, P., Z.W. Kundzewicz and G. Benito, Historical hydrology for studying flood risk in Europe, *Hydrological Sciences Journal*, 51(5), 739-764, 2006.
- Christofides, A., A. Efstratiadis, D. Koutsoyiannis, G.-F. Sargentis, and K. Hadjibiros, Resolving conflicting objectives in the management of the Plastiras Lake: can we quantify beauty?, *Hydrology and Earth System Sciences*, 9 (5), 507–515, doi:10.5194/hess-9-507-2005, 2005.
- Eckhardt, R., Stan Ulam, John von Neumann and the Monte Carlo method, in *From Cardinals to Chaos*, ed. By N. G. Cooper, Cambridge University, NY., 1989.
- Hazen, A., Storage to be provided in impounding reservoirs for municipal water supply, *Trans. Amer. Soc. Civil Eng.*, 77, 1539-1640, 1914.
- Hurst, H. E., Long-term storage capacity for reservoirs, *Trans. Amer. Soc. Civil Eng.*, 116, 770-799, 1951.
- Klemes, V., One hundred years of applied storage reservoir theory, *Water Resources Management*, 1(3), 159-175, 1987.
- Kolmogorov, A.N., Wiener'sche Spiralen und einige andere interessante Kurven in Hilbert'schen Raum, *Dokl. Akad. Nauk URSS*, 26, 115–118, 1940.
- Koutsoyiannis, D., The Hurst phenomenon and fractional Gaussian noise made easy, *Hydrological Sciences Journal*, 47 (4), 573–595, 2002.
- Koutsoyiannis, D., Climate change, the Hurst phenomenon, and hydrological statistics, *Hydrological Sciences Journal*, 48 (1), 3–24, 2003.
- Koutsoyiannis, D., Reliability concepts in reservoir design, *Water Encyclopedia, Vol. 4, Surface and Agricultural Water*, edited by J. H. Lehr and J. Keeley, 259–265, Wiley, New York, 2005.
- Koutsoyiannis, D. Scale of water resources development and sustainability: Small is beautiful, large is great, *Hydrological Sciences Journal*, 56 (4), 553–575, doi:10.1080/02626667.2011.579076, 2011.
- Koutsoyiannis, D., Hydrology and Change, *Hydrological Sciences Journal*, 58 (6), 1177–1197, 2013.
- Koutsoyiannis, D., and T.A. Cohn, The Hurst phenomenon and climate, *European Geosciences Union General Assembly 2008, Geophysical Research Abstracts, Vol. 10*, Vienna, 11804, European Geosciences Union, 2008 (<http://www.itia.ntua.gr/en/docinfo/849>).
- Koutsoyiannis, D., and A. Economou, Evaluation of the parameterization-simulation-optimization approach for the control of reservoir systems, *Water Resources Research*, 39 (6), 1170, 1–17, 2003.

References (2)

- Koutsoyiannis, D., G. Karavokiros, A. Efstratiadis, N. Mamassis, A. Koukouvinos, and A. Christofides, A decision support system for the management of the water resource system of Athens, *Physics and Chemistry of the Earth*, 28 (14-15), 599–609, doi:10.1016/S1474-7065(03)00106-2, 2003.
- Kritskiy, S.N., and M.F. Menkel, Long-term streamflow regulation (in Russian), *Gidrotekhn. Stroit.*, 11, 3-10, 1935.
- Kritskiy, S.N., and M.F. Menkel, Generalized methods for runoff control computations based on mathematical statistics, *Journal of Hydrology*, 172, 365-377, 1995. Translated by V. Klemes from the Russian original "Obobshchennye priemy rascheta regulirovaniya stoka na osnove matematicheskoy statistiki", *Gidrotekh. Stroit.*, 2: 19-24, 1940.
- Langousis, A., and D. Koutsoyiannis, A stochastic methodology for generation of seasonal time series reproducing overyear scaling behaviour, *Journal of Hydrology*, 322, 138–154, 2006.
- Metropolis, N., The beginning of the Monte Carlo method, in *From Cardinals to Chaos*, ed. by N. G. Cooper, Cambridge University, NY., 1989.
- Metropolis, N. and S. M. Ulam, The Monte Carlo method, *J. Amer. Statist. Assoc.*, 44, 335-341, 1949.
- Moberg, A., D.M. Sonechkin, K. Holmgren, N.M. Datsenko, and W. Karlen, Highly variable Northern Hemisphere temperatures reconstructed from low- and high-resolution proxy data, *Nature*, 433(7026), 613-617, 2005.
- Moran, P. A. P., A probability theory of dams and storage systems, *Aust. J. Appl. Sci.* 5, 116-124, 1954.
- Nalbantis, I., and D. Koutsoyiannis, A parametric rule for planning and management of multiple reservoir systems, *Water Resources Research*, 33 (9), 2165–2177, 1997.
- Pleshkov, Ya. F., Rapid and accurate computations for storage reservoirs (in Russian), *Gidrotekhn. Stroit.*, 6, 1939.
- Papoulis, A., *Probability and Statistics*, Prentice-Hall, London, 1990.
- Ripley, B. D., *Stochastic Simulation*, Wiley, New York, 1987.
- Rippl, W., The capacity of storage reservoirs for water supply, *Proc. Inst. Civil Eng.*, 71, 270-278, 1883.
- Savarenskiy, A.D., A method for runoff control computation, *Journal of Hydrology*, 172, 355-363, 1995. Translated by V. Klemes from the Russian original "Metod rascheta regulirovaniya stoka", *Gidrotekh. Stroit.*, 2: 24-28, 1940.
- Schultz, G. A., Determination of deficiencies of the Rippl-diagram method for reservoir sizing by use of synthetically generated runoff data, *Proceedings XIIth Congress of ICOLD* (International Commission on Large Dams), March/April 1976, Mexico City, 1976.
- Thomas, H. A., Jr. and R. P. Burden, *Operations Research in Water Quality Management*, Harvard University, 1963.
- Κουτσογιάννης, Δ., Μελέτη λειτουργίας ταμιευτήρων, *Γενική διάταξη έργων εκτροπής Αχελώου προς Θεσσαλία*, Ανάδοχος: Ειδική Υπηρεσία Δημοσίων Έργων Αχελώου - Γενική Γραμματεία Δημοσίων Έργων - Υπουργείο Περιβάλλοντος, Χωροταξίας και Δημόσιων Έργων, Συνεργαζόμενοι: Γ. Καλαούζης, ELECTROWATT, Π. Μαρίνος, Δ. Κουτσογιάννης, 420 σελίδες, 1996.